



## Bulletin BPI 17-08

**Subject: Rotor drum in hat rubs backing plate**

**Vehicle Involved: Subaru, Honda**

**Condition: Rust jacking behind backing plate**

**Repair Procedure:** The tolerance between the backing plate and the lip of the drum-in-hat style rotor on the rear of many Subaru and Honda vehicles is very tight when new. If the vehicle is driven in the rust belt areas or anywhere they use corrosive materials on the roads for ice control, the rotor may start rubbing near the lip adjacent to the internal drum (fig1).

This is caused by “rust jacking” between knuckle and backing plate. If you see a shiny area (fig 2) on backing plate, you have this condition. The proper repair is to clean rust area and replace the bulging backing plate.

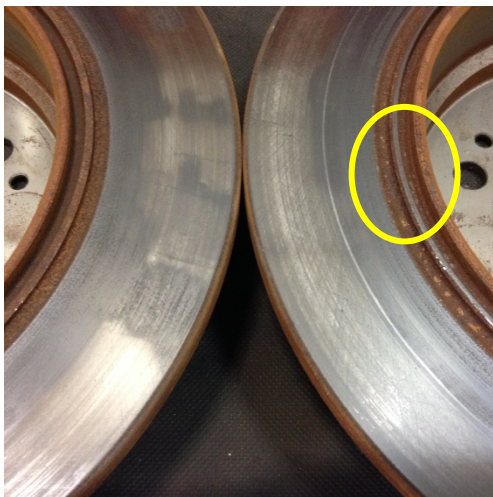


Fig 1



Fig 2